

Making a patient database backup in RealGUIDE® 5.0

Summary

Accessing the commands for patient database backup	2
Available commands for backup	3
Patient database folder position	4

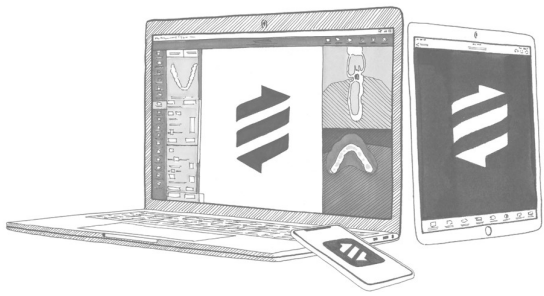


3DIEMME S.r.l.
P.IVA 02938110133
www.3diemme.it
support@3diemme.it

Registered Office:
Via Risorgimento,9
22063 Cantù – (CO)
Italia

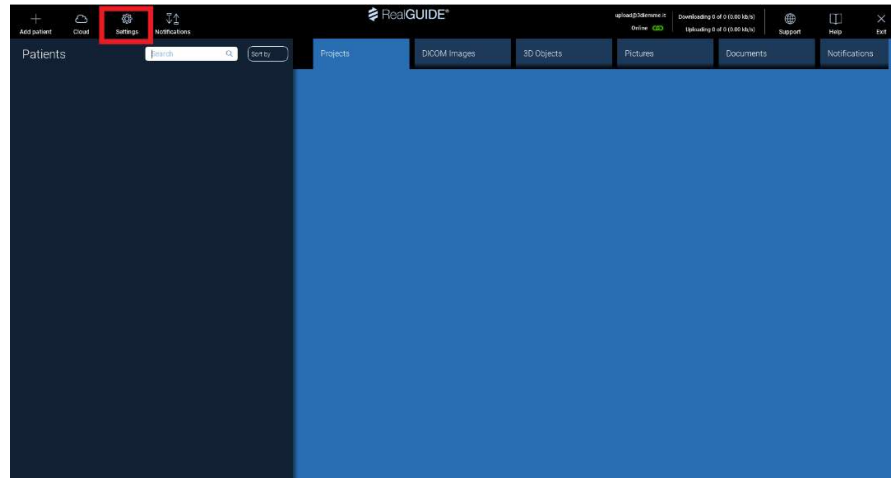
Operative Headquarters:
Via Delle Baraggette,10
22060 Figino Serenza – (CO)
Italia

Phone:
+39 031 7073353

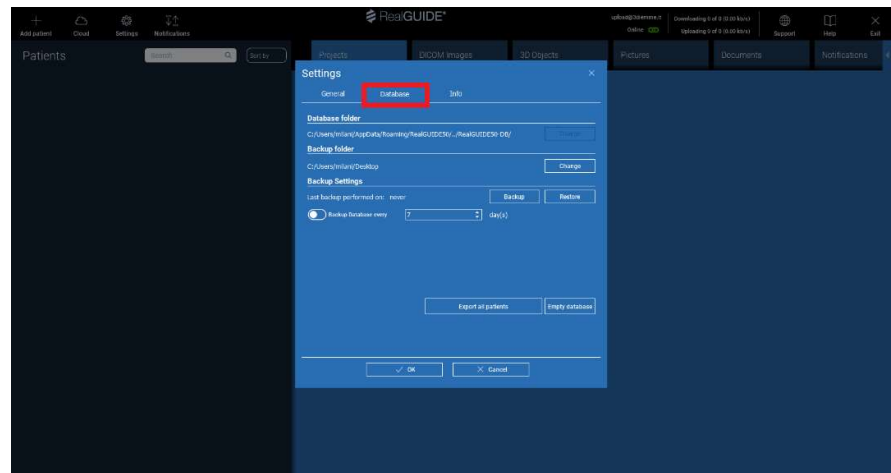


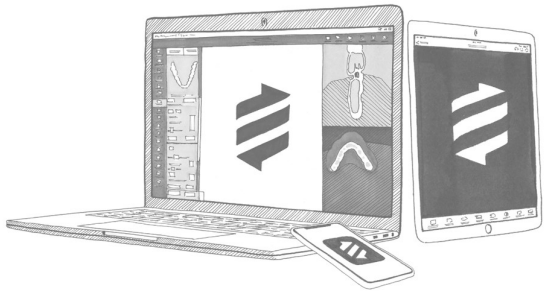
Accessing the commands for patient database backup

1. Run the software
2. Click on *Settings*



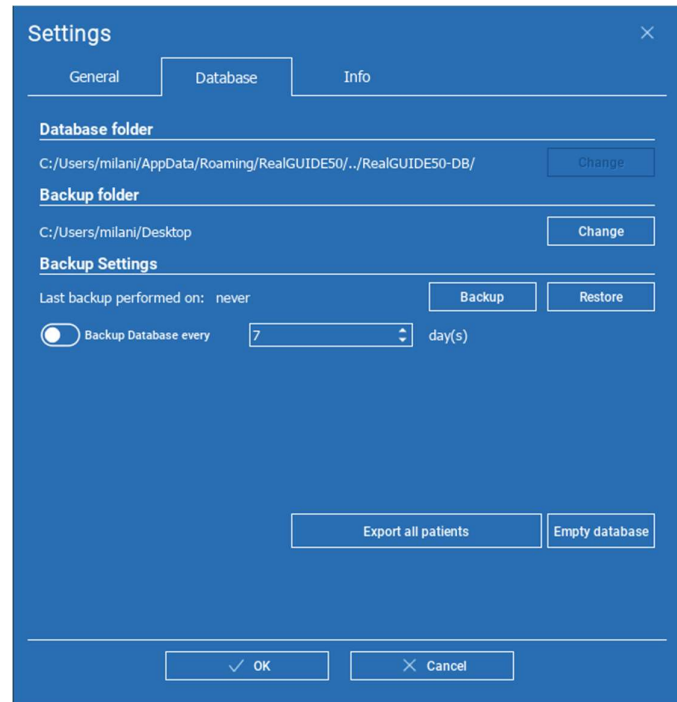
3. Click on *Database* to access the available commands





Available commands for backup

- **Database folder:** can't be changed;
- **Backup folder:** shows where patient database backup folder is saved (it must be a folder on PC, not on external hard disks or online archives);
- **Backup settings:** you can set a periodic automatic backup using command *Backup Database every...* according to your needs. **ATTENTION!** This option requires a lot of space, uncontrolled automatic backups may saturate your computer memory;
- Click on **Backup** button to create one ZIP archive containing all local database patients (including the ones downloaded from the Cloud). ZIP is created in the folder assigned in *Backup folder* field. Time for ZIP generation depends on the number of patients and the files dimensions;
- **Restore:** allows you to select the backup folder you previously created and import again its content in RealGUIDE;
- **Export all patients:** create one ZIP folder for each patient in the database (excluding the ones downloaded from the Cloud) in the position specified by the user. To import back these studies, you have to follow the same steps as for creating a new patient. You can import only one ZIP-patient folder at a time;
- **Empty database:** delete current patient database (the operation can't be cancelled).



Settings

General Database Info

Database folder
C:/Users/milani/AppData/Roaming/RealGUIDE50/./RealGUIDE50-DB/ Change

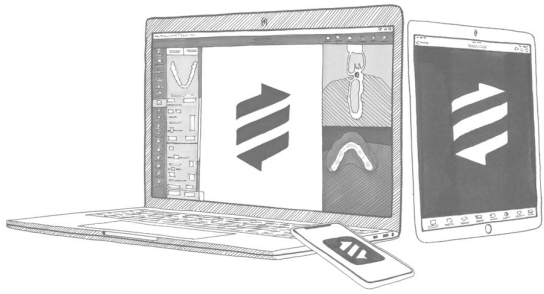
Backup folder
C:/Users/milani/Desktop Change

Backup Settings
Last backup performed on: never Backup Restore
 Backup Database every 7 day(s)

Export all patients Empty database

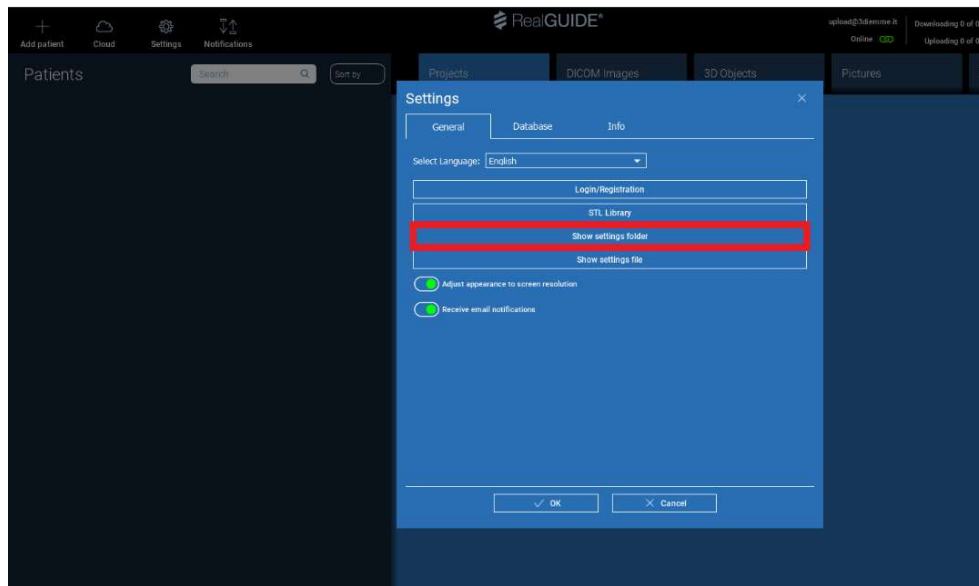
OK Cancel



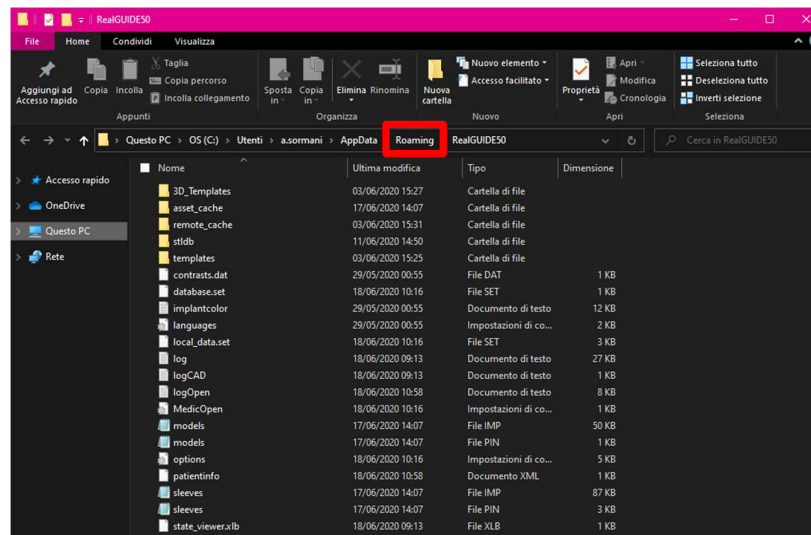


Patient database folder position

1. Run the software
2. Click on *Settings*
3. In *General* page, choose *Show settings folder*



4. When settings folder *RealGUIDE50* opens, go back to the previous folder *Roaming*

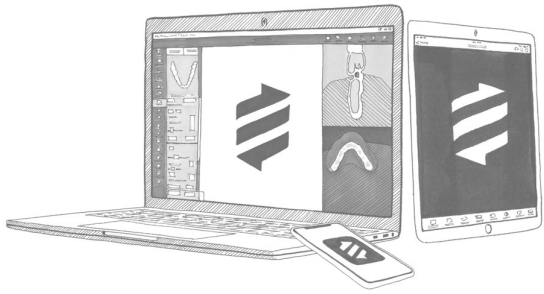


3DIEMME S.r.l.
P.IVA 02938110133
www.3diemme.it
support@3diemme.it

Registered Office:
Via Risorgimento,9
22063 Cantù – (CO)
Italia

Operative Headquarters:
Via Delle Baraggette,10
22060 Figino Serenza – (CO)
Italia

Phone:
+39 031 7073353



5. Patient database folder is *RealGUIDE50-DB*

